

Rimini Protect™ Advanced Database Security Suite

ADVANCED DATABASE SECURITY SUITE:

- ▶ Advanced Database Security
- ▶ Database Assessment
- ▶ Custom Rules
- ▶ Database Discovery
- ▶ Security Managed Services
- ▶ Security Professional Services

Rimini Protect security solutions are purpose built to improve security postures and reduce security risk exposure without modifying vendor code and when vendor-provided security patches are not available – helping protect against active exploits. Our solutions are tailored to a client’s ecosystem to **complement and enhance** their existing security strategies, protecting against **known (discovered) and unknown (undiscovered or zero-day)** threats and vulnerabilities. We help protect databases that are both currently supported by the vendor as well as databases that are beyond vendor support.

Rimini Street offers a 3rd party support exclusive and flexible subscription model for features to help protect your databases. With Advanced Database Security Suite (ADSS), individual features, capabilities, and even managed services are tailored to your security and risk management needs saving you time and money.

Advanced Database Security (ADS)

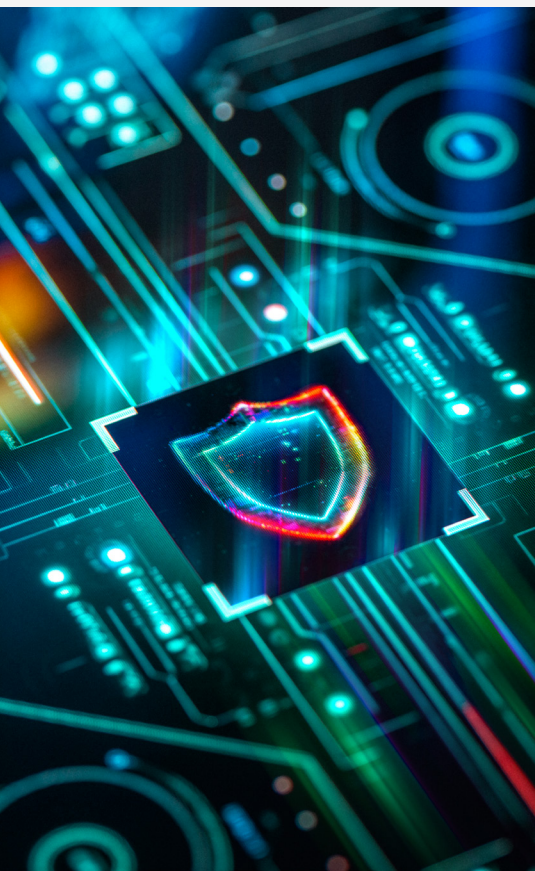
Need help protecting critical databases without the availability of patches?

ADS provides active defense by monitoring the memory activity of databases, proactively protecting against the exploitation of database vulnerabilities. ADS addresses entire categories of weaknesses that contain associated vulnerabilities. Some common weakness areas have hundreds of associated vulnerabilities discovered on a continual basis.¹ ADS effectively protects our clients' database confidentiality, integrity, and availability when potential threats are identified.

This technology is sometimes also referred to as virtual patching. OWASP defines virtual patching as, “A security policy enforcement layer which prevents the exploitation of a known vulnerability.”² Virtual patching is an integral feature of ADS; however, virtual patching is only one of the many features and capabilities of our solution.

¹CVEdetails.com CVEs related to CWE-502 CVSS score >= 9 <https://www.cvedetails.com/vulnerability-list/cwe-502/vulnerabilities.html?page=1&cvssscoremin=9&order=7>

²OWASP: Virtual Patching Best Practices https://owasp.org/www-community/Virtual_Patching_Best_Practices



KEY ADS ADVANTAGES



EASE OF USE

- › Deploy and configure quickly and easily
- › Dynamically enable product and security updates without restarting database services
- › Help protect database versions that are both currently supported and those no longer fully supported by the vendor



DETECT

- › Monitor granular database activity in-memory, including use of and access to specific database objects
- › Monitor key database attack surface points:
 - Network: Access to databases from enterprise applications, application servers and database development tools
 - Local: Access to databases from the local host
 - Intra-Database: Activity within or inside databases



PROTECT

- › Prevent intrusion, data theft, and other attacks on Database Management Systems (DBMS), with the incorporation of rule-based policies for users, queries, and DBMS objects
- › Prevent key types of database vulnerabilities, including Denial of Service (DOS), SQL Injection, Buffer Overflow, Privilege Escalation, etc.
- › Terminate suspicious user sessions and quarantine users from database access
- › Review detailed audit information and user activity, enabling more responsive digital forensic and incident response (DFIR)

Database Assessment Module

How can I ensure that the databases throughout my enterprise are still configured correctly?

As organizations evolve, many organizations find it challenging and time-consuming to continually assess their evolving databases. Staying on top of auditing settings, detecting backdoors, and managing configurations can be overwhelming. The ADS assessment module can assist in monitoring your environment and identifying security and compliance issues more efficiently. This allows you to prioritize your IT resources for more important tasks. Some common examples:

Over 5,000 security verifications are included. Some common examples include:

- Audit settings
- Database configuration checks
- Vulnerability scanning leveraging predefined and customizable techniques and capabilities



Custom Rules Module

Need to deal with today's policy changes quickly?

Rimini Street offers clients the ability to create custom rules with specific governance, risk management, and compliance needs. Rimini Street can also spearhead the development of rules for specific situations with Security Managed Services or Professional Services (described in below sections of this document).

Some common example use cases include:

- Custom security policies for industry regulations or IT governance standards
- Change control processes enhancement identifying when tables or data are modified or deleted
- Logging of access to sensitive data or escalated privileges for auditing purposes
- Alerts when specified thresholds for database transactions are exceeded
- Additional user verification (outside of business hours / unexpected locations)

CURRENTLY SUPPORTED DATABASES

- › Microsoft SQL Server
- › Oracle
- › Db2
- › SAP HANA
- › SAP ASE (Sybase)
- › MongoDB
- › MySQL
- › MariaDB
- › Percona Server for MySQL
- › PostgreSQL
- › Teradata

SECURITY PROFESSIONAL SERVICES

Prefer time and materials over enhancement hours?

Need fast and effective implementation of Advanced Database Security Suite features and services?

We have a deep familiarity with your database systems through the everyday support services we provide. This familiarity combined with our global team of security experts ensures that Security Professional Services are a natural extension of our client relationships to ensure that you maximize your benefits from your ADSS subscription.

Need help determining which features and services are right for you and your database security strategy? Reach out to Rimini Street to take advantage of our global expertise that has helped hundreds of clients with these decisions in the past.

Explore your options today >

Database Discovery Module

Challenges finding every version of development databases in your organization?

Organizations often struggle to manage sprawling database portfolios. This can happen when users create new databases for testing or other purposes, and on occasion there are databases that are no longer needed for current business processes. These databases may contain sensitive data such as payment information or proprietary data which can be unaccounted for and not properly managed. The Database Discovery module enables you to find databases you may not be aware of, discover and protect data across your entire database footprint, and ensure users have the appropriate level of access.

Our discovery feature includes:

- Database discovery
- Sensitive data discovery
- User rights management

Security Managed Services

Need to ensure that you are getting the maximum value of ADSS features?

Facing IT resource constraints?

Don't want to manage more tools in your environment?

Rimini Street can deliver Rimini Protect security solutions as fully managed services providing you with efficient and effective security and risk management outcomes tailored to your business needs.

Security Managed Services covers ongoing management and operations for the ADS Suite features for which you have subscribed as described in our services catalog. Services include:

- Management of daily ADS alerts
- On demand quarterly reports of security managed services
- Run preconfigured assessments and/or discovery

Rimini Street offers additional enhancement hours that can be applied towards services that are specific to your business needs and your individual database ecosystem. Services include:

- Custom Rules Development
- Custom scanning tailored to meet your security and compliance needs

[riministreet.com](https://www.riministreet.com) | info@riministreet.com | [linkedin.com/company/rimini-street](https://www.linkedin.com/company/rimini-street) | [x.com/riministreet](https://www.x.com/riministreet)

©2024 Rimini Street, Inc. All rights reserved. "Rimini Street" is a registered trademark of Rimini Street, Inc. in the United States and other countries, and Rimini Street, the Rimini Street logo, and combinations thereof, and other marks marked by TM are trademarks of Rimini Street, Inc. All other trademarks remain the property of their respective owners, and unless otherwise specified, Rimini Street claims no affiliation, endorsement, or association with any such trademark holder, or other companies referenced herein. This document was created by Rimini Street, Inc. ("Rimini Street") and is not sponsored by, endorsed by, or affiliated with Oracle Corporation, SAP SE, or any other party. Except as otherwise expressly provided in writing, Rimini Street assumes no liability whatsoever and disclaims any express, implied, or statutory warranty relating to the information presented, including, without limitation, any implied warranty of merchantability or fitness for a particular purpose. Rimini Street shall not be liable for any direct, indirect, consequential, punitive, special, or incidental damages arising out of the use or inability to use the information. Rimini Street makes no representations or warranties with respect to the accuracy or completeness of the information provided by third parties, and reserves the right to make changes to the information, services, or products, at any time. M_4134 | LR0034879 | US-10292024

Rimini Street